



# TRUEMAX

**Boom Pump Upper Part**

**Model: TP25M4U**





## Product Features

### ✓ **STABLE HYDRAULIC SYSTEM**

German Rexroth-produced double-pump and double-circuit open hydraulic system. The swing cylinder features rapid reversal and light impact. The electronically controlled reversing system is simple to use and easy to maintain. The unique design of the independent oil and water tanks facilitates easy maintenance. A superior filtration system assures hydraulic oil purity.

### ✓ **HIGH-EFFICIENCY PUMPING SYSTEM**

- a) The volume of the hopper can be filled up to 0.6m<sup>3</sup>. The inner wall is arced to prevent material accumulation and promote suction power.
- b) Wear-resistant eye plates and cutting ring are used for the S-valve for durability and low maintenance costs.
- c) The mixing system is driven by a hydraulic motor with a simple transmission structure for easy maintenance.
- d) Rational blade design improves concrete suction and can automatically reverse if sticking. After reversing, it can return to normal rotation.

### ✓ **LIGHTWEIGHT BOOM AND OUTRIGGER**

WELDOX high-strength steel made by Swedish SSAB is used throughout the boom and outrigger, providing a high strength-to-weight ratio and excellent durability. The balance valve is made by Hawe of Germany and comes with an overload buffer protection function, greatly improving reliability.

### ✓ **LOW-CONSUMPTION AND HIGH-EFFICIENCY LUBRICATION SYSTEM**

The centralized lubrication system provides low consumption and high efficiency and the servo-lubricating grease pump provides excellent performance. A multi-blade progressive lubricating grease distributor comes with a clog indicator for all the respective lubricating points, and the jam of an individual fluid circuit will not affect normal work.

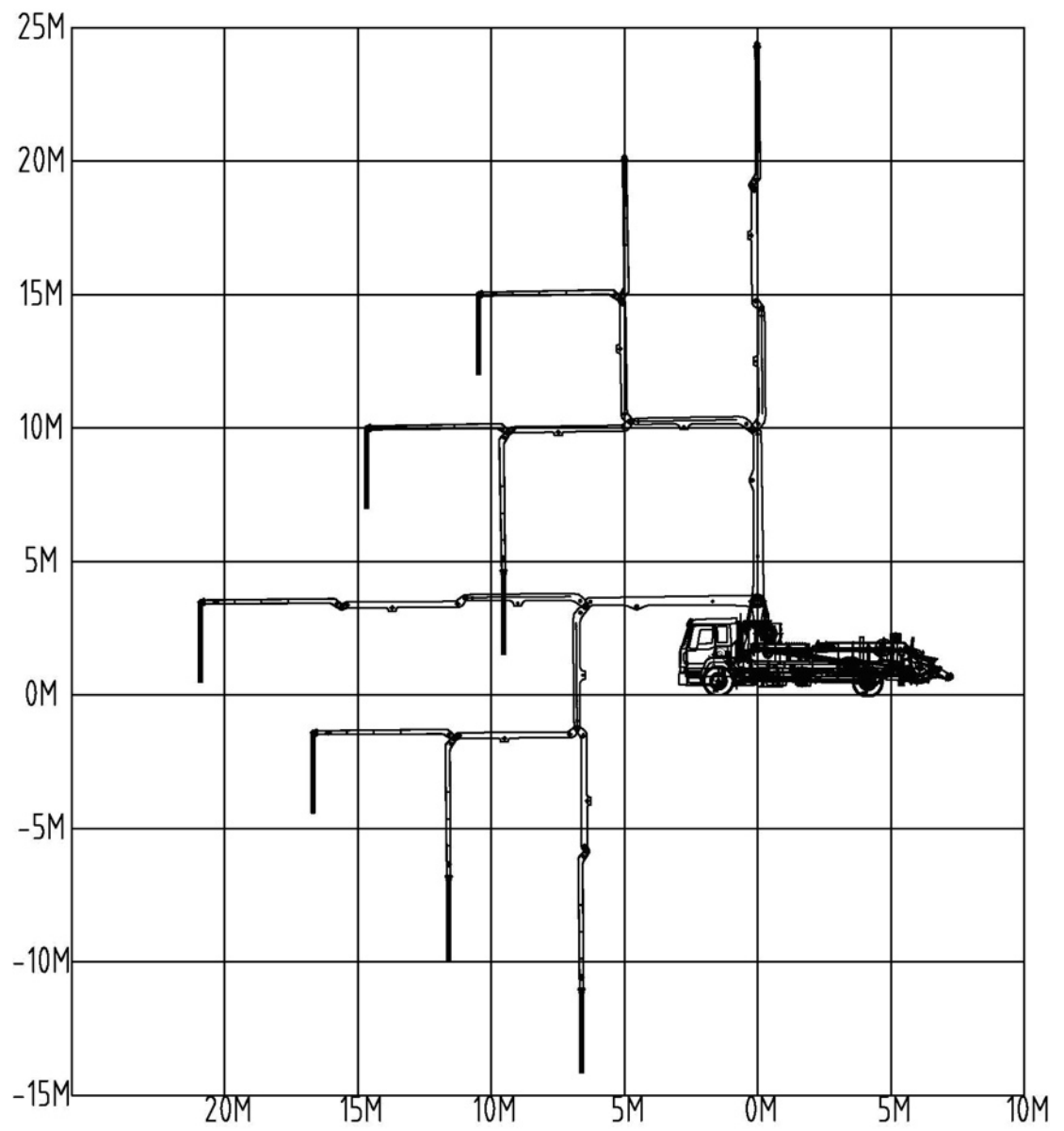
### ✓ **ERGONOMIC OPERATING CONTROL SYSTEM**

Comes with three operating modes: Electrical cabinet panel operation, wireless remote control operation, and manual emergency operation.



# Drawing

# Drawing





# Main Specification

## BOOM SYSTEM

Item	Unit	Parameter	Remark
Max. Vertical Reach	m	24.2	
Max. Horizontal Reach	m	20.6	
Reach Depth	m	10.4	
Unfolding Height	m	6.1	
1st Arm Length	mm	6500	
2nd Arm Length	mm	4590	
3rd Arm Length	mm	4590	
4th Arm Length	mm	4907	
Boom Control Mode	mm	Manual / Wireless Remote	
Boom Type		M / Z	
Boom Section Articulation	°	90°/180°/250°/240°	
Slewing Range	°	360°	
Front Outrigger Spread	mm	5272	
Rear Outrigger Spread	mm	6442	
Front-Rear Outrigger Distance	mm	5198	
End hose Length	m	3	
Arm Attached Pipeline Diameter	mm	Φ125	
Legs Opening (Front/Rear)		X Type / Swinging Type	
Boom Steel Material		#700	Bao Steel

## PUMP SYSTEM

Concrete Valve		S Valve	
Concrete Piston		China	
Max. Concrete Output (Low Pressure)	m³/h	100	
Max. Concrete Pressure (Low Pressure)	MPa	6.3	
Hydraulic Strokes/Pumping frequency (High/Low)	/Min	26	
Hydraulic oil cooling		Air cooling	
Concrete Cylinder Diameter/Stroke	mm	Φ230*1800	
Hopper Charge Height	mm	≤1450	
Concrete Hopper Capacity	L	700	
Concrete Slump	mm	140-230	
Max. Aggregate Diameter	mm	40	
Lubricating System		Centralized automatic	



## Main Specification

### HYDRAULIC SYSTEM

Item	Unit	Parameter	Remark
Hydraulic System Type		Open Circuit	
System Working Pressure	MPa	32	
Main Hydraulic Pump		REXROTH A11VLO190LRDU2	GERMAN
Main Hydraulic Pump Displacement	ml/r	190	
Main Electro-Hydraulic Valve		ATOS	
Oil Suction & Return Filter		MP/HYDAC	CHINA
Multi-Way Valve		HAWE	GERMAN
Boom Counterbalance Valve		HAWE	ITALY
Hydraulic Pump on Boom System		REXROTH	
Multi-Way Valve		WALVOIL	ITALY
Pressure Relief Valve		ATOS	ITALY
Hydraulic Seals		PARKER	USA
Hydraulic Hose		ALFAGOMMA	ITALY
Hydraulic Oil Tank Capacity	L	600	
Hydraulic Oil Cooling		Air Cooling	
Hydraulic Cylinder Bore/Stroke	mm	Φ130*80*1800	
PTO Box		STIEBEL	CHINA
Turret Reducer		COMER	ITALY
Hose Joint		AOCHUAN	CHINA
Pressure Gauge		TESIS	GERMAN

### CLEANING SYSTEM

Water Tank Capacity	L	670	
Water Pump		PANDA	CHINA

### ELECTRICAL SYSTEM

Power Supply		From Chassis	
Control Module		PLC	
Working Voltage	V	24, DC	
Relay		OMRON	
Proximity Switch		SCHNEIDER	
Wireless Remote Controller		NBB / HBC	
PLC Module		SIEMENS	GERMAN

### DIMENSIONS & WEIGHT

Upper Part Length	mm	7650	
Upper Part Width	mm	2450	
Upper Part Height	mm	3215	
Upper Part Weight	kg	13200	



## Project Reference

