



TRUEMAX

37m Truck Mounted Boom Pump Upper Part

Model: TP37R4U



Endless Pursuit of Product and Service



Product Features

STRONG AND RELIABLE POWER SYSTEM

Transfer case: Stiebel-brand transfer case features durability, power, efficiency, and reliable operation.

STABLE HYDRAULIC SYSTEM

German Rexroth-produced double-pump and double-circuit open hydraulic system. The swing cylinder features rapid reversal and light impact. The electronically controlled reversing system is simple to use and easy to maintain. The unique design of the independent oil and water tanks facilitates easy maintenance. A superior filtration system assures hydraulic oil purity.

HIGH-EFFICIENCY PUMPING SYSTEM

- a) The volume of the hopper can be filled up to 0.6m³. The inner wall is arced to prevent material accumulation and promote suction power.
- b) Wear-resistant eye plates and cutting ring are used for the S-valve for durability and low maintenance costs.
- c) The mixing system is driven by a hydraulic motor with a simple transmission structure for easy maintenance.
- d) Rational blade design improves concrete suction and can automatically reverse if sticking. After reversing, it can return to normal rotation.

LIGHTWEIGHT BOOM AND OUTRIGGER

WELDOX high-strength steel made by Swedish SSAB is used throughout the boom and outrigger, providing a high strength-to-weight ratio and excellent durability. The balance valve is made by Hawe of Germany and comes with an overload buffer protection function, greatly improving reliability.

LOW-CONSUMPTION AND HIGH-EFFICIENCY LUBRICATION SYSTEM

The centralized lubrication system provides low consumption and high efficiency and the servo-lubricating grease pump provides excellent performance. A multi-blade progressive lubricating grease distributor comes with a clog indicator for all the respective lubricating points, and the jam of an individual fluid circuit will not affect normal work.

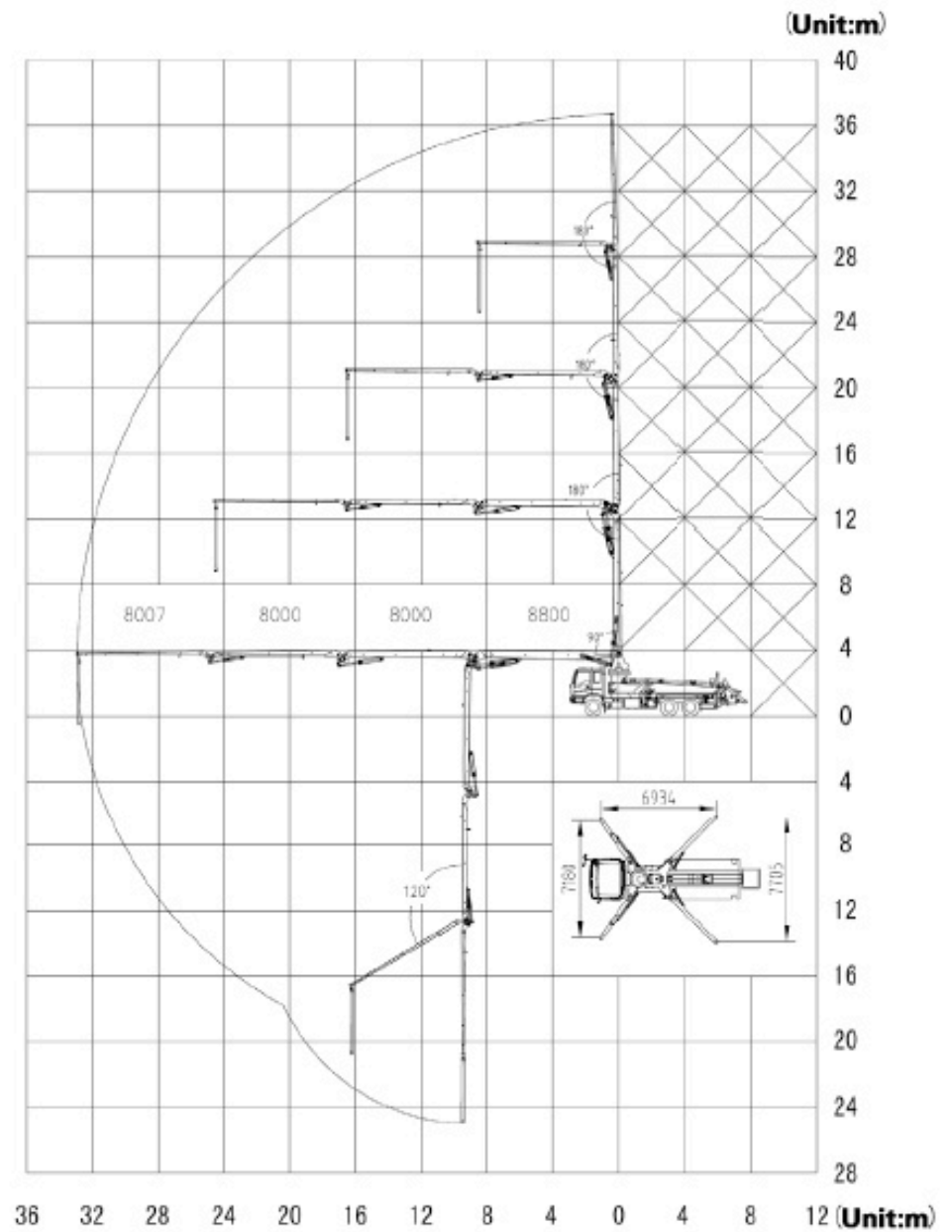
ERGONOMIC OPERATING CONTROL SYSTEM

Comes with three operating modes: Electrical cabinet panel operation, wireless remote control operation, and manual emergency operation.

Pumping Range



Pumping Range





Main Specification

BOOM SYSTEM	
Max.vertical reach	36.8M
Max.horizontal reach	32.8M
Reach depth	24.0M
Unfolding height	8.5M
1st Arm Length	8800MM
2nd Arm Length	8000MM
3rd Arm Length	8000MM
4th Arm Length	8000MM
Boom control mode	Manual/Wireless Remote
Boom Type	R
Boom section articulation	92/180/180/240
Slewing range	±365°
Front Outrigger spread	7150MM
Rear Outrigger spread	7750MM
End hose length	4M
Boom steel	Bao Steel
Arm attached pipeline diameter	125MM

PUMP SYSTEM	
Concrete Valve	S Valve
Max.Concrete Output	High/Low Pressure: 70/120m³/h
Max.Concrete Pressure	High/Low Pressure: 8.87/5.73MPa
Hydraulic Strokes/Pumping frequency	High/Low Pressure: 14/24Min-1
Rated working pressure	32MPa
Hydraulic oil cooling	Air cooling
High And Low Pressure Exchanger	Available
Hopper Charge Height/Capacity	1500MM/0.7 m³
Concrete Cylinder Bore/Stroke	Φ230*2000mm
Hopper Charge Height	≤1490MM
Concrete Hopper Capacity	600L
Concrete Slump	140-230MM
Max.Aggregate Diameter	40MM
Concrete Slump	0.7 m³



Main Specification

HYDRAULIC SYSTEM	
Hydraulic System Type	Open Loop
System Working Pressure	30MPa
Main Hydraulic Pump/model	Rexroth/A11VL1090
Main Hydraulic Pump Displacement	190ml/r
Main Electro-Hydraulic Valve	ATOS ITALY
Oil Suction & Return Filter	CHINA
Multi-Way Valve	HAWE GERMAN
Boom Balance Valve	HAWE GERMAN
Pressure Relief Valve	ATOS ITALY
Hydraulic Seals	PARKER USA
Hydraulic Hose	MANUL ITALY
Hydraulic Oil Tank Capacity	900L
Hydraulic Oil Cooling	Air Cooling
High and Low Pressure Bore/Stroke	125*2000mm
PTO Box	STIEBEL
Turret Reducer	BREVNINI ITALY
CLEANING SYSTEM	
Water Tank Capacity	970L
ELECTRICAL SYSTEM	
Power Supply	From Chassis
Control Module	Siemens CPU224 DC
Working Voltage	DC24V
Relay	Omron
Proximity Switch	Schneider
Wireless Remote Controller	NBB
DIMENSIONS & WEIGHT OF UPPER PART	
Overall Length	9568MM
Overall Width	3510MM
Overall Height	2500MM
Total weight	16000KG

Main Specification



Photos For Reference

